

# Florida Department of Health

## Early Hearing Detection and Intervention Program Advisory Committee

**Florida  
HEALTH**

April 11, 2024

# Presenter



## **Kimberly Porter, Director**

Newborn Hearing Screening Program

Early Hearing Detection and Intervention Program

Division of Children's Medical Services

Florida Department of Health

# Meeting Agenda

- Division of Children's Medical Services Update
- Committee Member Updates
- Early Hearing Detection and Intervention (EHDI) Program Staffing Updates
- Legislative Implementation Updates
- Grant Updates
- Program Performance Data
- Program Expanding Outreach
- Congenital Cytomegalovirus (cCMV) Update
- Children's Hearing Aid Program Update
- Family Support Program Update

# Committee Member Updates

## Retiring:

- Robert C. Fifer, PhD  
Associate Professor of Clinical Pediatrics  
University of Miami  
Mailman Center for Child Development  
Department of Pediatrics

# Committee Member Updates

## New Members:

- Rachel McCaffery, BSN, Newborn Screening Coordinator  
Wolfson Children's Hospital
- Sergio Guerreiro, AuD, President  
Florida Academy of Audiology

## Vacant Seats:

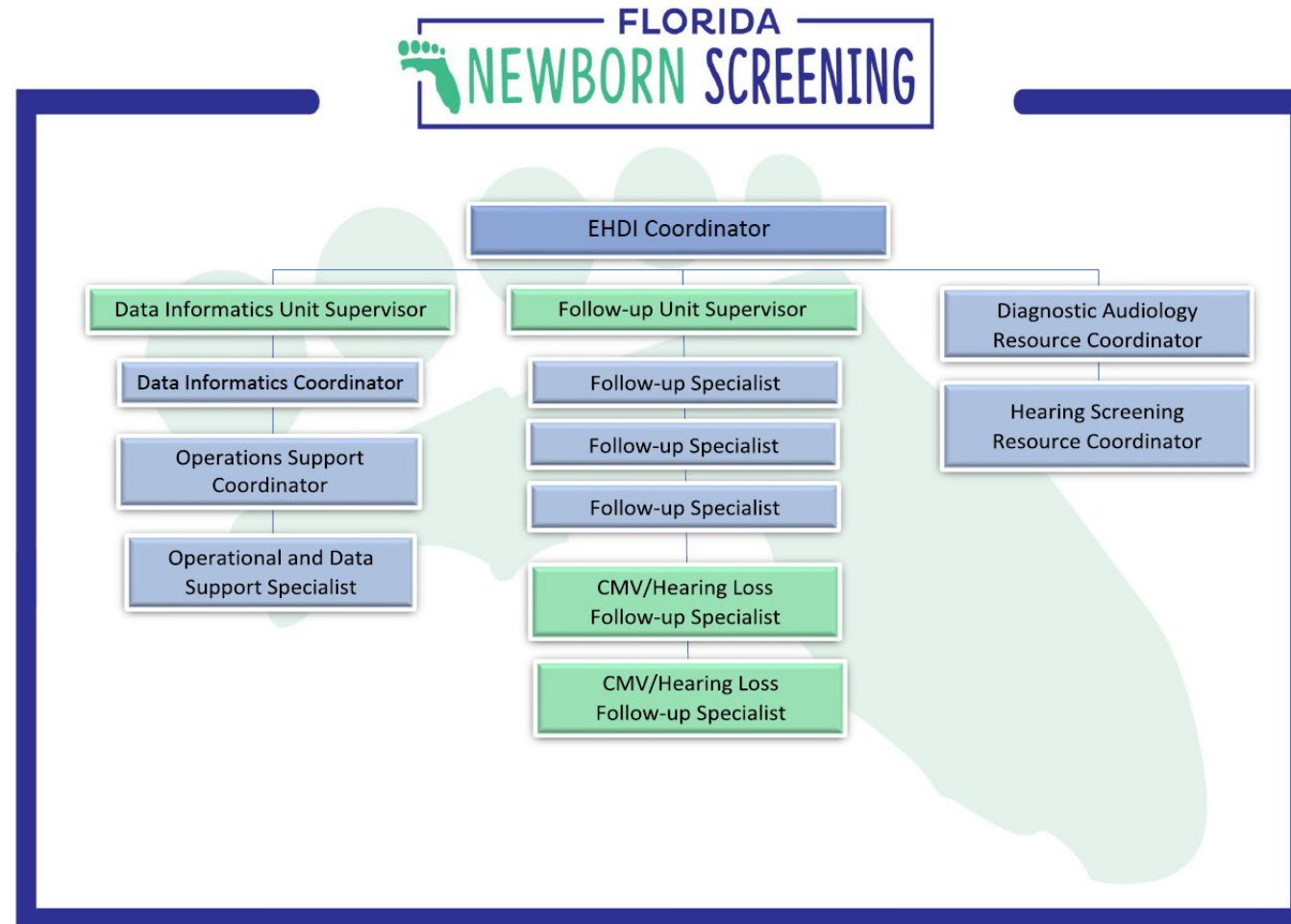
- Hands and Voices
- Deaf and Hard of Hearing (DHH)
- Audiologist

# Committee Member Updates, continued

Fall 2023 meeting member survey responses:

- Preferred meeting day: Friday
- Preferred meeting time: Afternoon
- Preferred meeting mode: Virtual
- Preferred in-person location: Jacksonville or Fort Lauderdale

# EHDI Program Staffing Update



# Legislative Implementation Update

## cCMV screening and follow-up:

- Screenings conducted by hospital or primary care provider (PCP).
- Reported through eReports™ cCMV Module.
- 8,537 cCMV screens performed since January 1, 2023.
- 118 newborns screened positive for cCMV since January 1, 2023.

## cCMV follow-up conducted by EHDI staff:

- Contact the neonatal intensive care unit or the newborn's PCP.
- Refer newborns with cCMV to the Early Steps Program.
- Specialized follow-up for failed hearing screens through diagnosis.



# Legislative Implementation Update, continued

## cCMV training and technical assistance:

- Restructure of EHDI staff to meet training and technical assistance needs.
- Routine data analysis and targeted outreach.
- Updates to stakeholder reporting module and resources:
  - eReports cCMV reporting module and instructions.
  - Frequently asked questions.

# Legislative Implementation Update, continued

## Children's Hearing Aid Program (CHAP):

- Executed contract with Sertoma Speech and Hearing Foundation of Florida, Inc. (Sertoma) in March 2023.
- Sertoma submitted start-up and marketing plans in April 2023.
- Program initiation in June 2023:
  - 62 audiology providers participating in the program.
  - 60 children served.
- Amended contract to include services in August 2023:
  - \$1,000 per ear, per year for hearing aid related services.
  - \$1,500 per ear, per year for cochlear implant related services.

# Grants Update

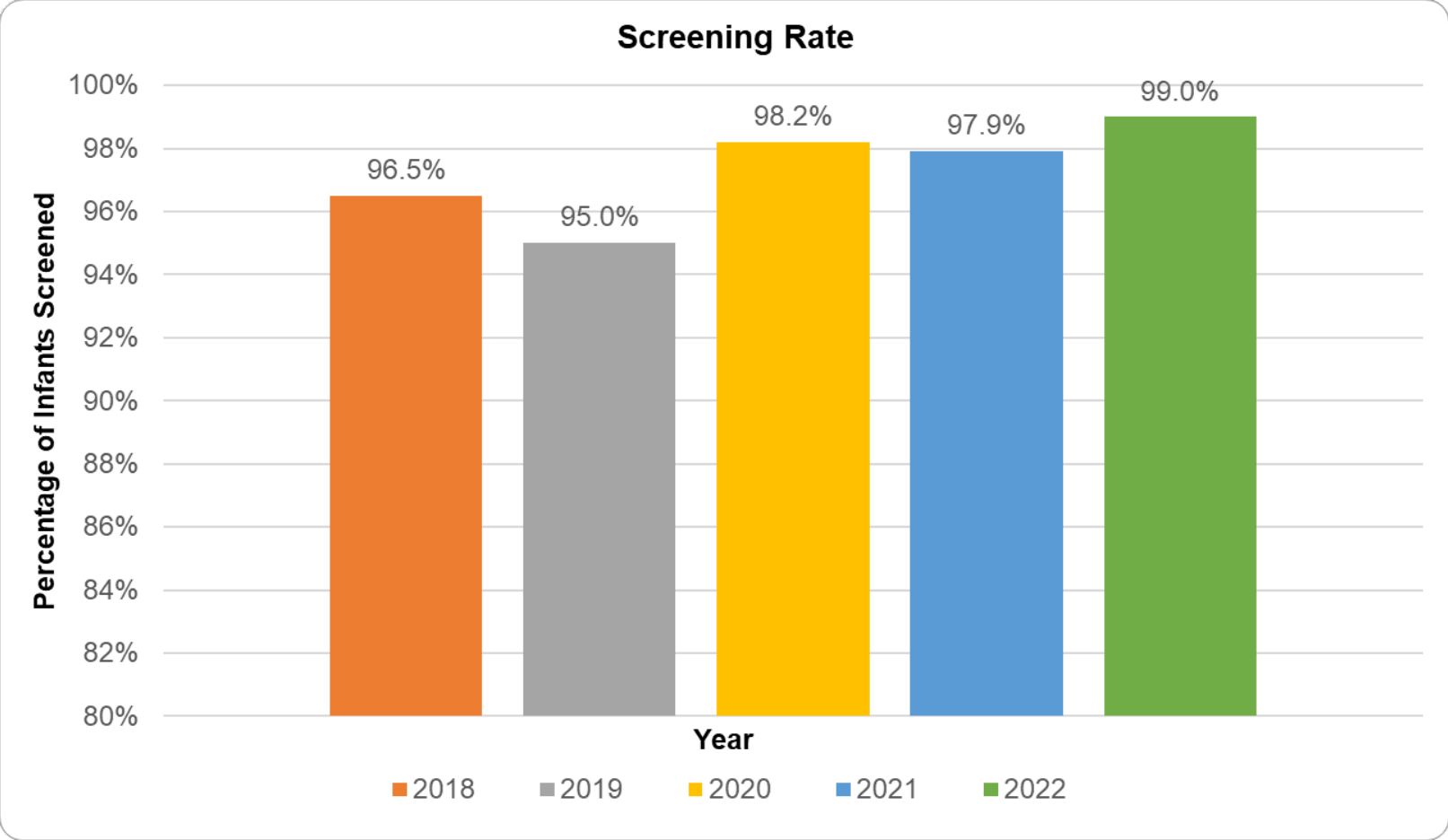
## Health Resources and Services Administration (HRSA):

- Awarded new 5-year grant.
  - Effective April 2024 – March 2029.
- Expanded grant goals.
  - Collecting hearing screening data birth to age 3.
  - Establishing an infrastructure to report language acquisition outcomes.

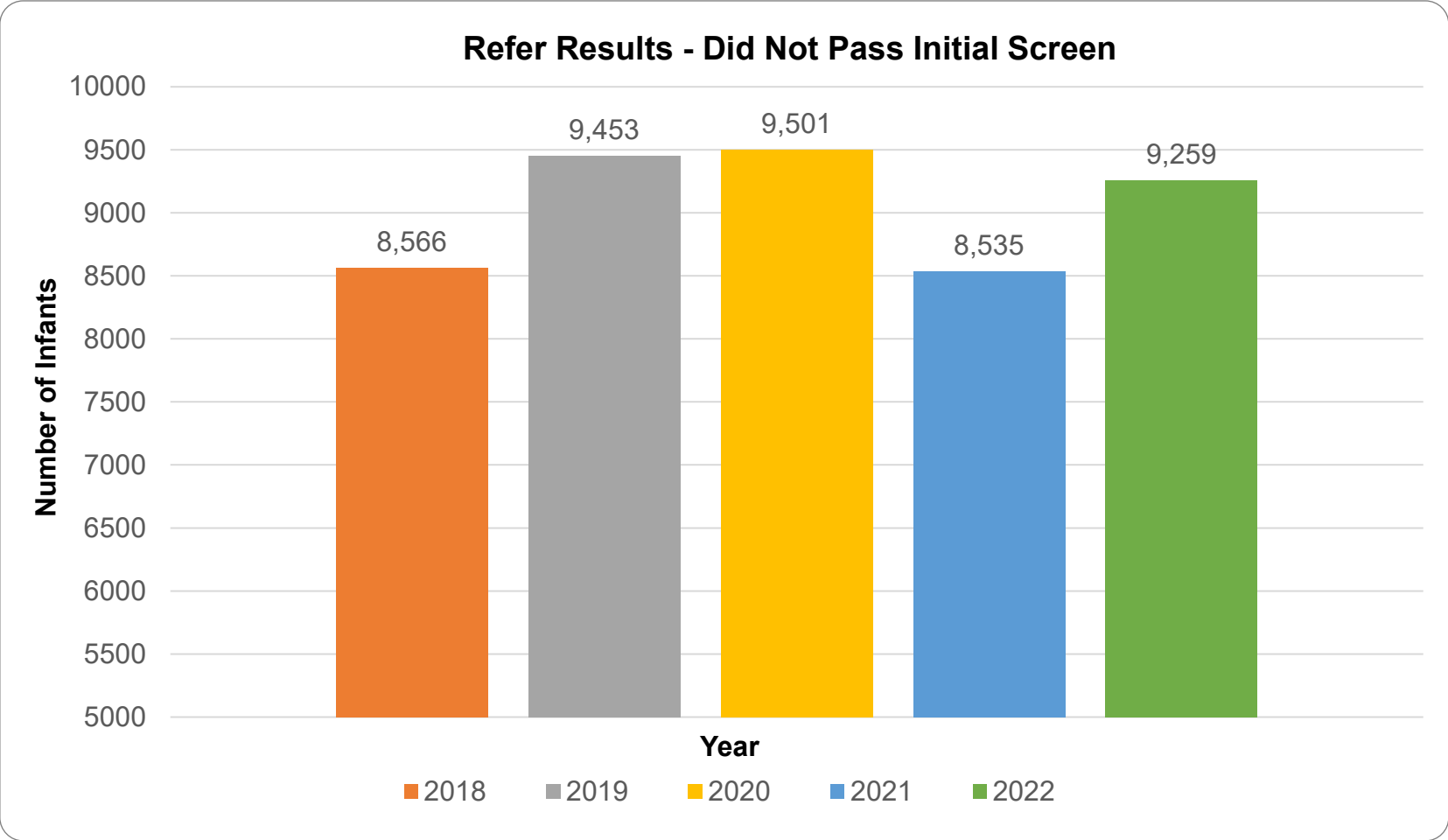
## Centers for Disease Control and Prevention (CDC):

- Current grant extended through June 2025.

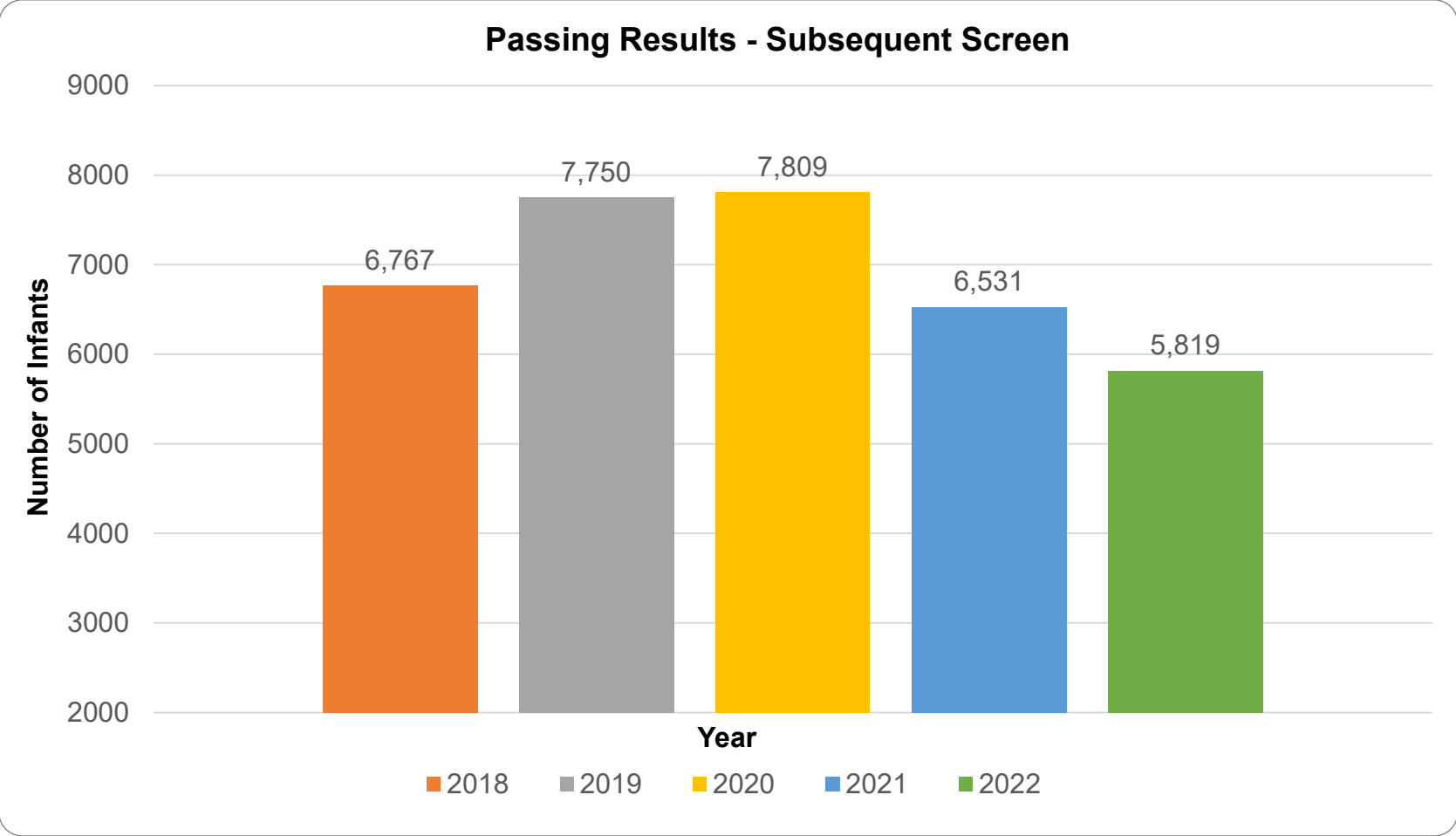
# EHDI Program Update



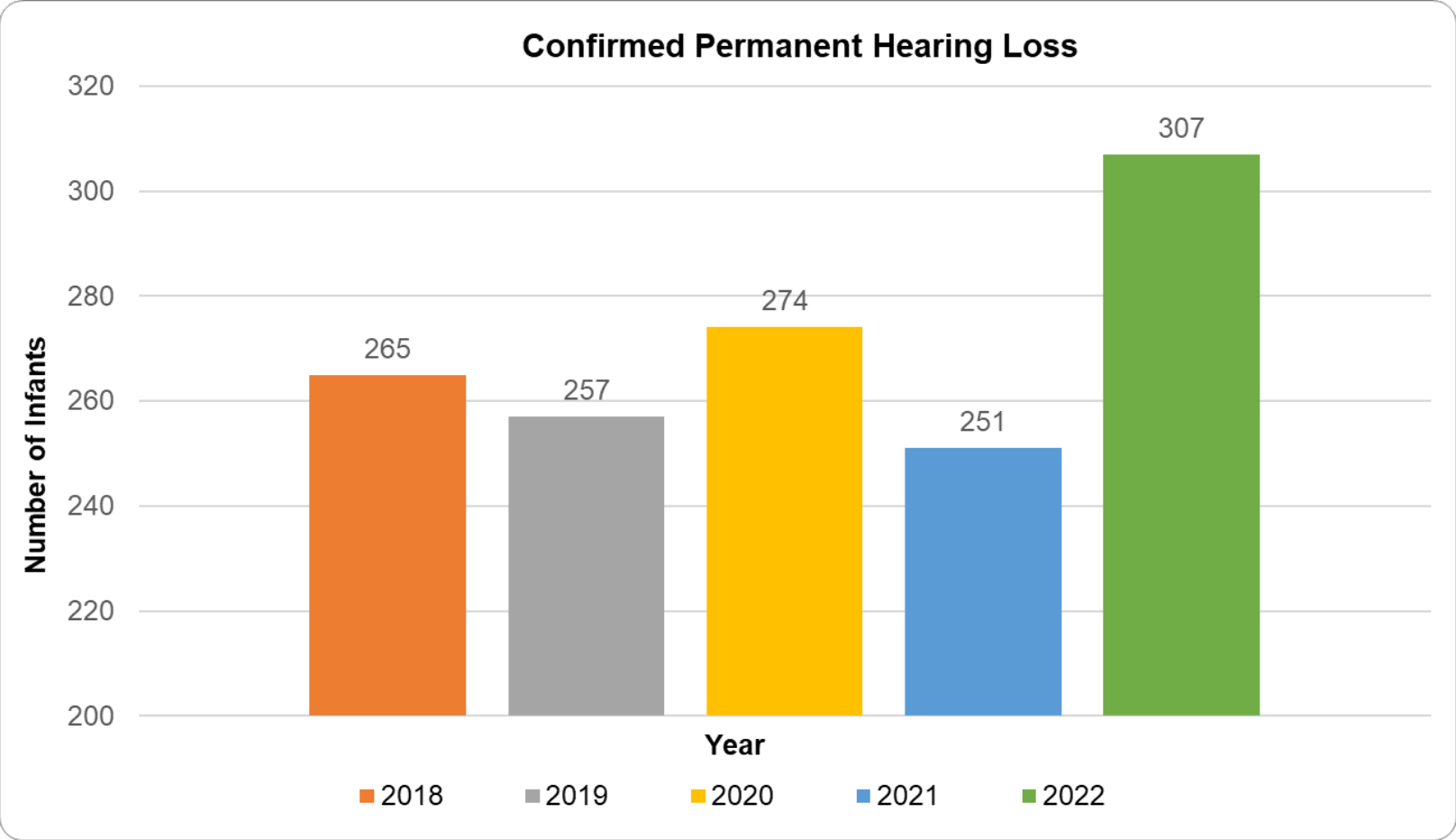
# EHDI Program Update, continued



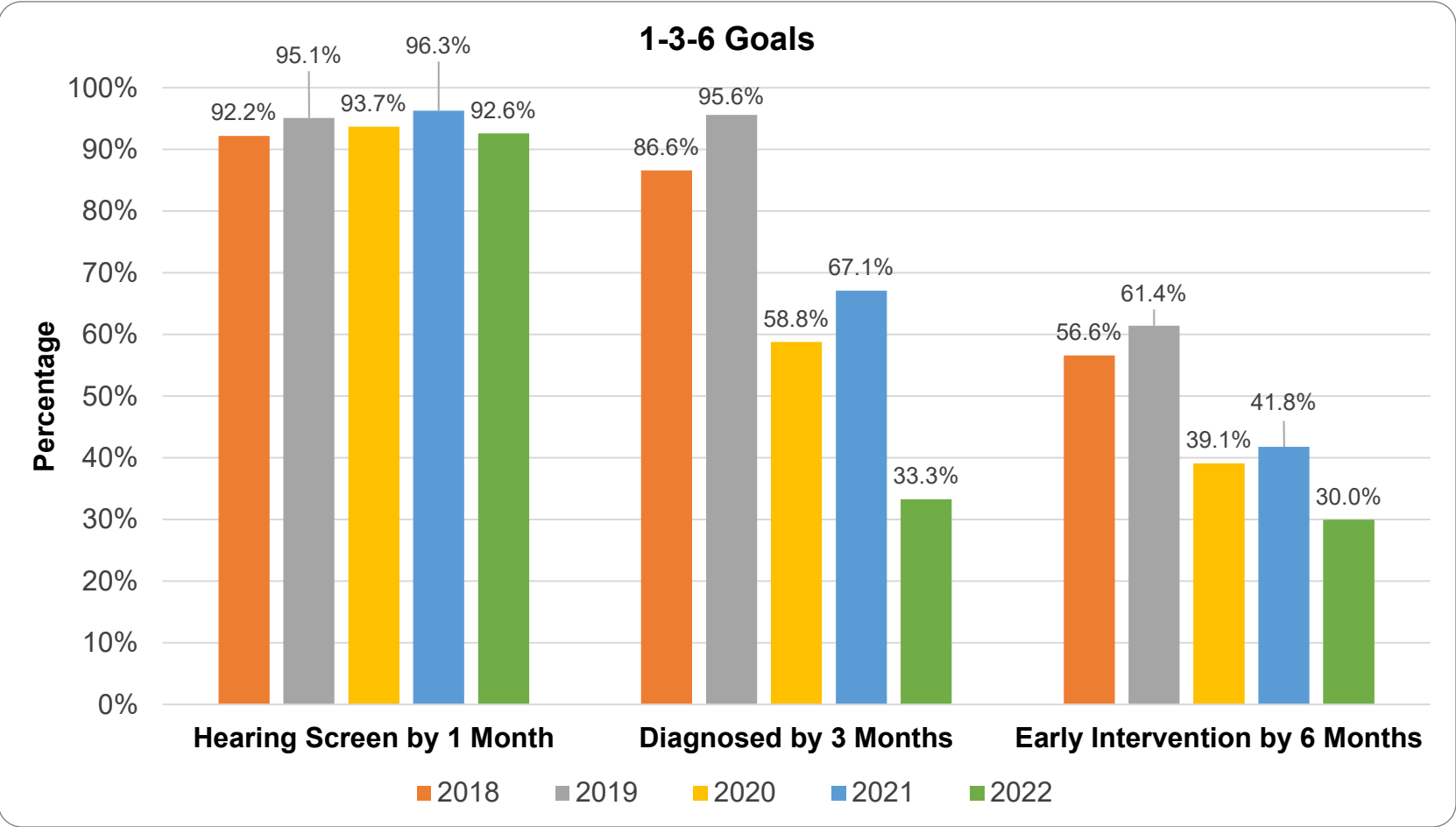
# EHDI Program Update, continued



# EHDI Program Update, continued

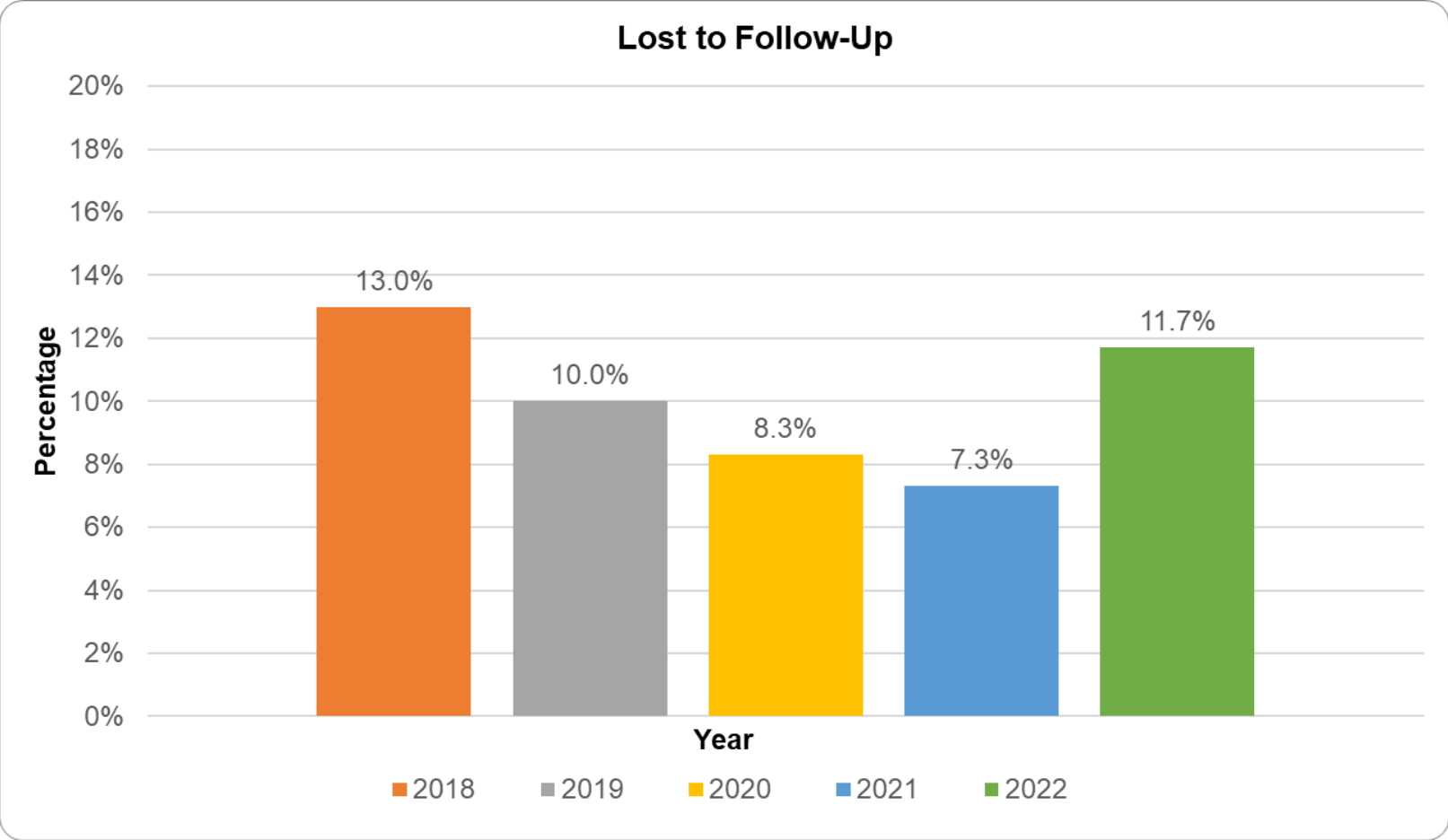


# EHDI Program Update, continued





# EHDI Program Update, continued



# Presenters



Margaret Waterman, MA  
EHDI Screening Resource Coordinator  
Florida Department of Health

Teryl Camus, AuD  
EHDI Program Audiologist  
Florida Department of Health

# Expanding Outreach Efforts

## Annual Birth Rate Florida Vital Statistics, 2023

- Total Births: 221,708
- Hospital Births: 216,947
- Birthing Center: 1,552
- Home Births: 2,815
- En Route: 361
- Clinic or Doctor's Office: 24
- Unknown: 9

# Expanding Outreach Efforts, continued

## Birthing Center Outreach 2023-2024

- Initial outreach includes:
  - Making contact and sharing program information.
  - Gathering hearing screen data from each site.
  - Sharing information about hearing screen equipment loan program.
- Technical assistance and training includes:
  - Providing training resources for screening.
  - Educating facility on hearing screen reporting process.
  - Setting up access to eReports™ and MOVEit.

# Expanding Outreach Efforts, continued

## Birthing Center Outreach Achievements 2023-2024:

- Completed 6 site visits 2023.
  - 6 birthing centers have MOVEit access.
  - 2 otoacoustic emissions (OAE) hearing screeners loaned.
  - 2 centers own hearing screen equipment.
  - 2 centers interested in loaned equipment.
- Completed 12 site visits 2024.
  - 12 birthing centers have MOVEit access initiated.
  - 1 center owns equipment.
  - 1 OAE hearing screener loaned.
  - 10 centers/midwives interested in loaned equipment.

# Expanding Outreach Efforts, continued

## Hurdles to Birth Center Outreach Process:

- Equipment and staffing issues include:
  - Shortage of hearing screen equipment.
  - Capacity of staff to screen babies after discharge from birth center.
- Billing issues include:
  - Limited knowledge of billing process.
  - Licensure/billing limitations.
- Reporting and data issues include:
  - Hearing screen reporting errors.
  - Capacity to track and monitor every baby born at home or in a birthing center.

# Expanding Outreach Efforts, continued

## Loaner Program Updates:

- Health Disparities Grant:
  - Invitation to Bid: Awarded on February 16, 2024
  - 15 OAE screening devices.
  - 13 ABR screening devices.
    - 5 diagnostic software licenses.
- Program Equipment Total:
  - 20 OAE hearing screeners.
  - 16 ABR hearing screeners.
    - 7 ABR diagnostic license upgrade.
    - Supplies for 90-days.

# Expanding Outreach Efforts, continued

## PCP Educational Material:

- Hearing Screening:
  - Collaboration with pediatric champion.
  - Recommendations from the Joint Committee on Infant Hearing 2019 Position Statement:
    - Perform repeat hearing screen.
    - Referral for diagnostic hearing evaluation.
- Cytomegalovirus (cCMV) Screening.



# Expanding Outreach Efforts, continued

## eReports Updates:

- Video trainings are available for the following:
  - Hearing Screening Module.
  - Diagnostic Hearing Evaluation Module.
  - cCMV Module.
- Expanded diagnostic module released November 1, 2023, includes the following:
  - Comprehensive pediatric testing.
  - Expanded risk factors for late onset hearing loss.
  - Follow-up recommendations and referrals.
  - Amplification fitting location and date.

# Expanding Outreach Efforts, continued

## Next Steps:

- Audiology and ENT outpatient clinic site visits to address:
  - Legislative requirements.
  - Age-specific pediatric services.
  - Barriers to reporting.
  - Educational materials created in collaboration with Florida School for the Deaf and the Blind.
- Establish criteria for long-term equipment loaners for:
  - Birth hospital.
  - Birthing center facility.
  - Audiologist.

# Contact Information

Kimberly Porter

EHDI Coordinator

Newborn Hearing Screening Program

Division of Childrens Medical Services

850-841-8675